

Christian Reid
Estate Agents



Cranleigh

£1,000pcm

Wyphurst Road, Cranleigh, GU6 7AX



2 Bedrooms



1 Reception



1 Bathroom

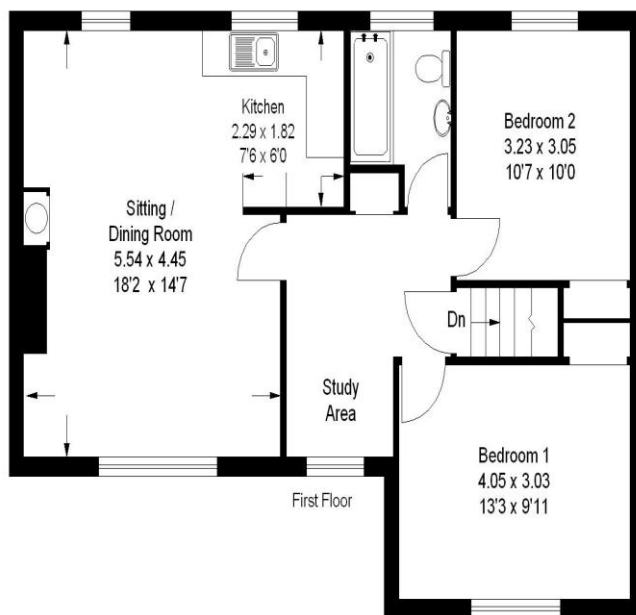


Maisonette



EPC: C

Immaculate first floor Maisonette | Quiet corner of a Cul-de-Sac | Private garden | Two Double bedrooms | Large open plan Living/Dining Room & Kitchen | Newly fitted Gas Central Heating | Double Glazed | Contemporary fixture & fittings | Neutral decor | Available late January | Unfurnished



This plan is for representation purposes only as defined by the RICS Code of Measuring Practice. Not drawn to scale unless stated. Please check all dimensions before making any decisions reliant upon them.

APPROX. GROSS INTERNAL FLOOR AREA : 756 SQFT / 70 SQM

